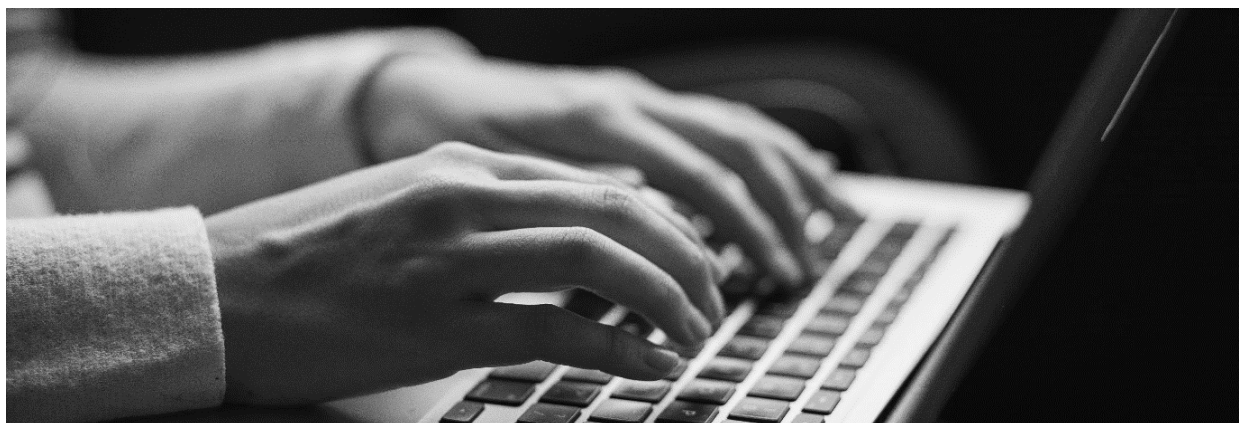


# LBO MODELLING

Live Online Classroom, 26 - 27 November 2026



This two-day LBO modelling course will focus on how to build and develop a fully integrated LBO-model in excel and the typical financing instruments being used in LBO transactions. Throughout the training, the theory will be illustrated by a case study where participants will build an LBO model in excel.

“

*I learned more in this two-day session than in most recent courses combined! The teacher was very knowledgeable and the interactions with him were very insightful. The time we got to work as a group was excellent!*

2025 Course Participant

## PROGRAMME

### Thursday, 26 November

09:00 - 9:20 CET	Introduction of the speaker & participants
09:20 - 10:30 CET	Introduction to LBOs and LBO modelling
10:30 - 10:45 CET	Break
10:45 - 12:00 CET	Sources & uses and post-acquisition balance sheet Work on case study & discussion
12:00 - 13:30 CET	Lunch Break
13:30 - 14:30 CET	Buyout debt instruments, debt sizing and debt modelling

---

14:30 - 14:40 CET	Break
14:40 - 16:00 CET	Buyout debt instruments, debt sizing and debt modelling (continued) Work on case study & discussion
16:00 - 16:15 CET	Break
16:15 - 17:00 CET	Work on case study & discussion

---

### Friday, 27 November

09:00 - 10:20 CET	Wrap up day 1 (Financial) Covenants Work on case study & discussion
10:20 - 10:30 CET	Break
10:30 - 12:00 CET	Equity instruments and Entry Envy Work on case study & discussion
12:00 - 13:30 CET	Lunch break
13:30 - 14:20 CET	Exit valuation and proceeds allocation Work on case study & discussion
14:20 - 14:30 CET	Break
14:30 - 16:15 CET	Return analysis (IRR/MM/Exit Envy) Work on case study & discussion

## LEADING SPEAKER



**Hans Haanappel** is an experience lecturer, specialising in financial modelling and valuation analysis. He advises various large and mid-sized privately held firms on valuations, mergers and acquisitions, damage calculations and capital budgeting. Hans has also acted for private equity firms on transactions in areas including valuation and financial modelling.

“

*One of the best courses I attended in many years! The detailed case study and the time we had to go through it as a group was precious. Hans is an impressive speaker who managed to keep the course informative and fun”*

2025 Course Participant

## WHO SHOULD ATTEND?

---

The course is most suitable for professionals such as Financial Accountants, Controllers, Portfolio Managers, Associates & Analysts who use LBO models in buyout transactions.

The prerequisites of this course are basic excel, corporate finance and accounting skills. Please note that although excel is used extensively and that maximizing the usage of excel is touched upon to support the modelling, this is not an excel training.

## REGISTRATION

---

Invest Europe member price: €1230

Non-member price: €1750

For more information and to register for the course, just follow the link or contact Elena Vasileva at [training@investeurope.eu](mailto:training@investeurope.eu)