
European Data Cooperative

The private equity data collection platform

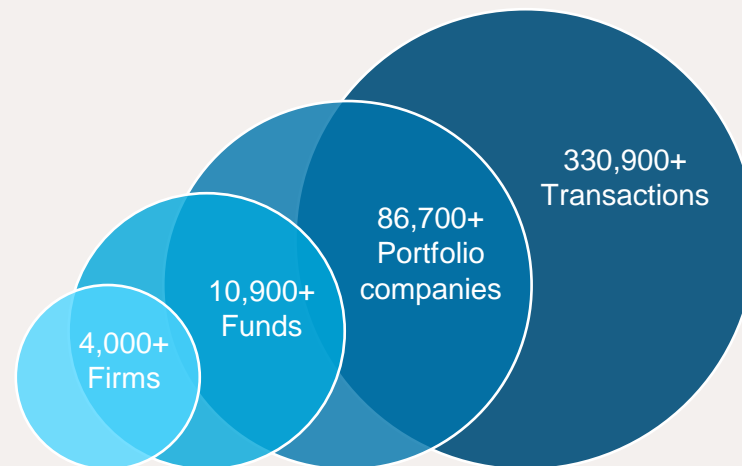


Introduction to the European Data Cooperative

What is the EDC?

- > The European Data Cooperative (EDC) is a joint initiative which is owned & operated by Invest Europe and its national association partners to collect Europe-wide private equity and venture capital industry data.
- > The EDC serves as a single data entry point for members of private equity and venture capital associations and other contributors across the continent.
- > Using one platform with a standardised methodology allows us to have consistent, robust, pan-European statistics that are comparable across the region.
- > As a result we produce the most comprehensive overview of Europe's private equity and venture capital markets available, allowing us to better inform fund managers, investors, policymakers, regulators, and other stakeholders.

The EDC is the **most comprehensive database** of European private equity and venture capital statistics

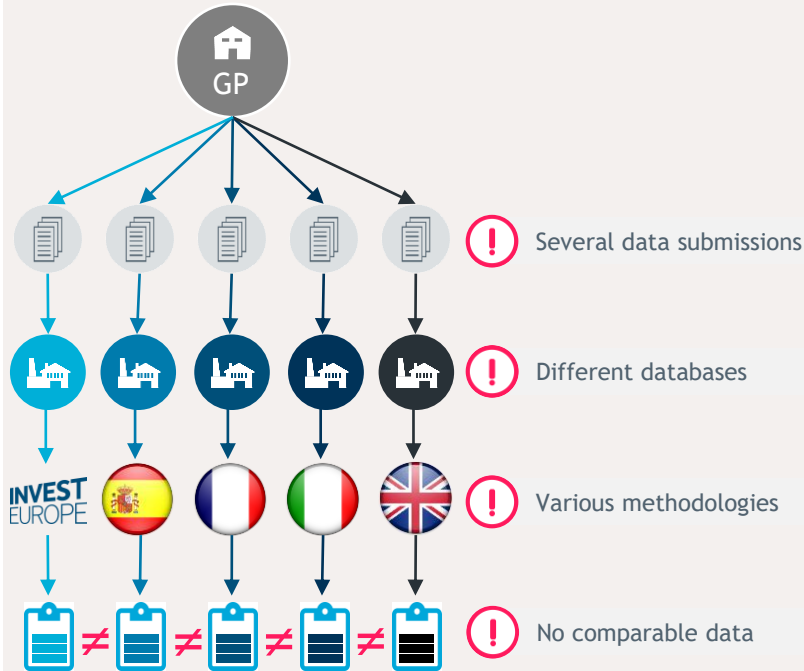


Introduction to the European Data Cooperative

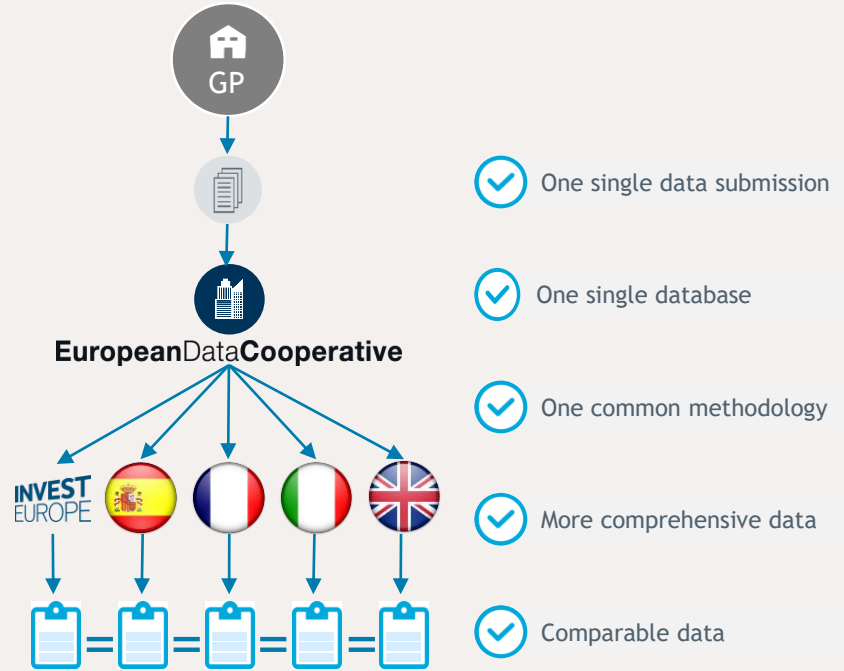
Why the EDC?

- This landmark project for the industry was initiated in 2013

BEFORE



AFTER



Purpose of the EDC

Comprehensive data to make the case for the industry

- We collect **activity** (Fundraising, Investments, & Divestments), **economic impact** (Employment, Turnover, EBITDA, & CAPEX), & **ESG** (portfolio company, fund, & firm level) data



The data is used to create bespoke reports and statistics on the European private equity industry. With data on more than 1,800 European private equity firms, the European statistics cover about 91% of the €754bn in capital under management in Europe.



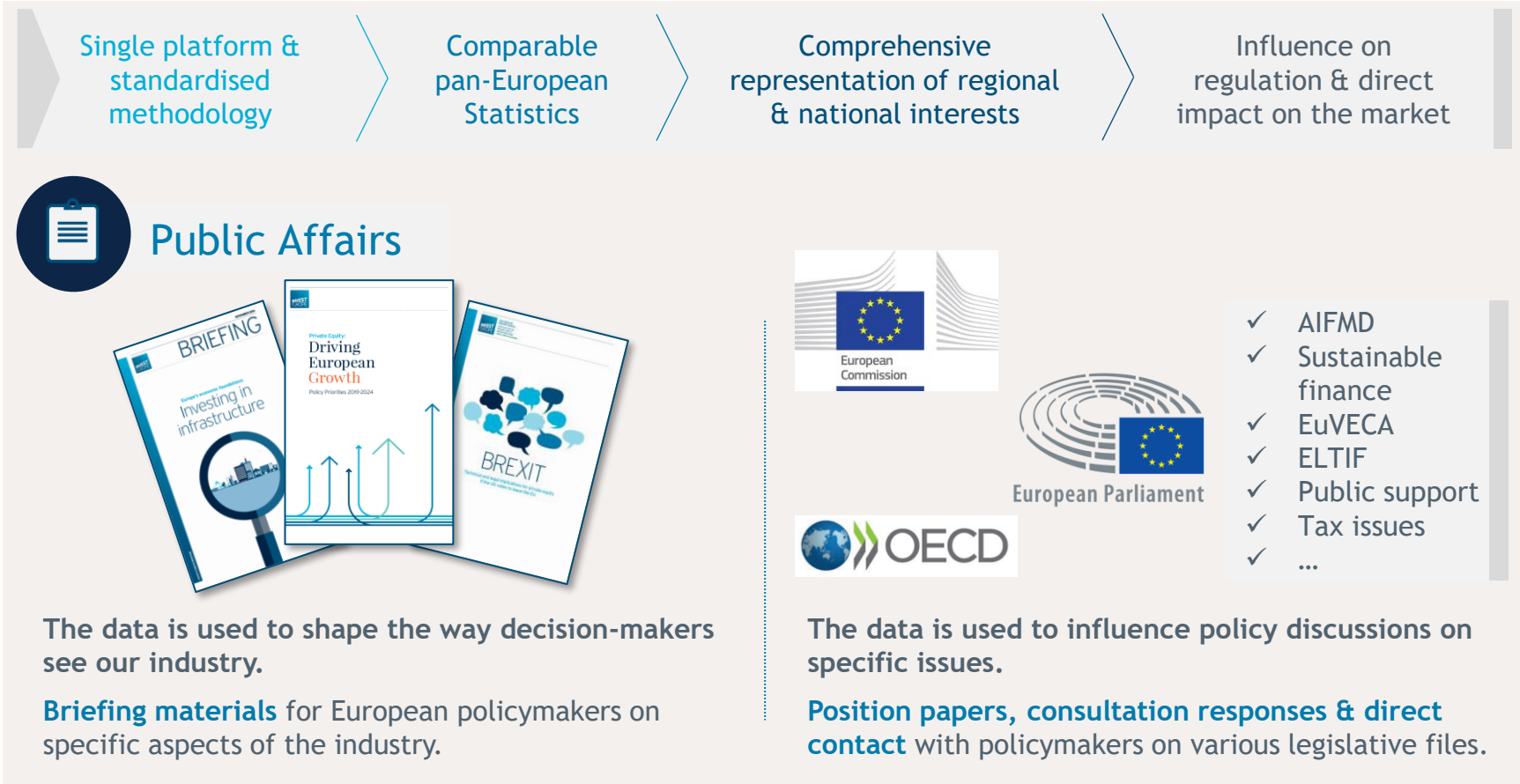
The data is used to provide aggregated analysis to media and opinion formers to make the case for investing in European private equity and reach the largest audience possible.



The data is used to increase awareness and understanding of the value of private capital to Europe's economy through publications and presentations in conferences.

Purpose of the EDC

Data integrity to represent the industry



Benefits of the EDC

Efficiency, confidentiality, and security

1

Single point of data entry

The EDC serves as a single data entry point for members of private equity and venture capital associations and other contributors across Europe. You do not need to enter data points multiple times for different associations.



2

Confidential & secure

Confidentiality remains of the utmost importance to the EDC and any data collected is held to stringent security standards. We have engaged KPMG to provide IT security advice.



3

Non-commercial & anonymous

Statistics derived from the EDC platform are only reported in aggregate to ensure anonymity. The data will not be used for commercial purposes.



4

By the industry for the industry

The EDC platform is jointly owned and operated by all private equity and venture capital associations across Europe.



By the industry for the industry

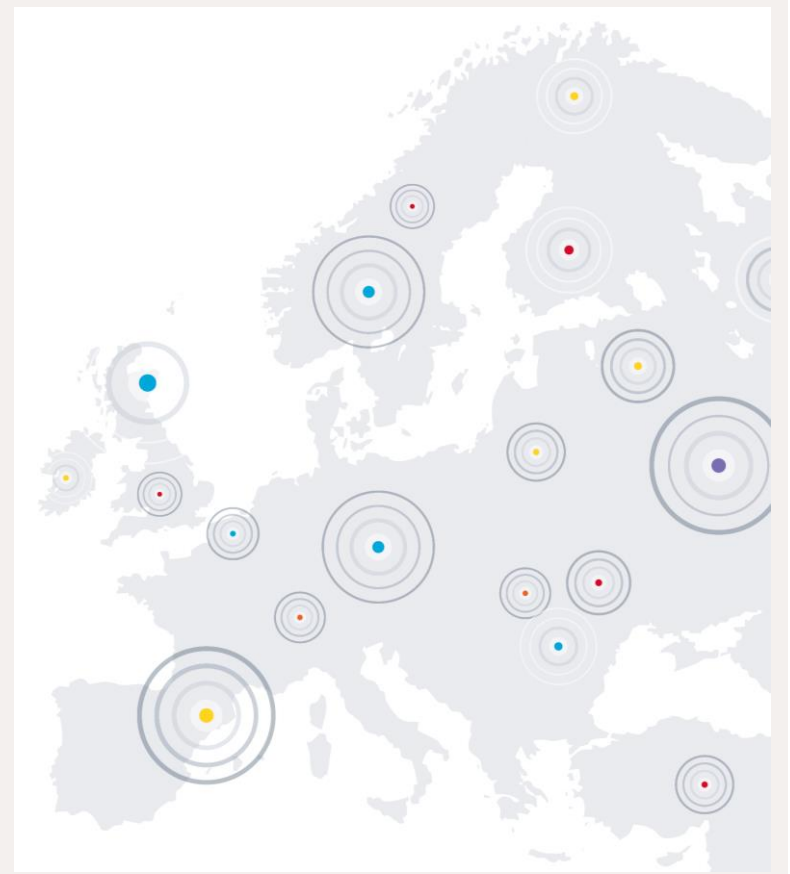
It's imperative to include your data in the EDC

We are grateful to the more than **1,250 fund managers across Europe** that **each year** contribute, making this initiative the **largest industry data collection of its kind**.

Without their **on-going commitment**, a comprehensive and accurate representation of **regional and national interests** would not be possible.

Thank you for joining the initiative.

The EDC's Terms & Conditions can be accessed [here](#).



What does the EDC platform look like?

GP Dashboard

Firm Profile / access rights

Account settings

Contact analyst in charge of collecting and auditing your data

Enter currently open surveys

Settings

- Account Settings
- Firm details
- EDC Tutorial
- Glossary
- Methodology
- Legal / Terms and Conditions
- Privacy
- Privacy Policy
- FAQ

Glossary terms used in platform

Manage data access rights

Access to general & association specific Terms & Conditions

Tutorial on how to use database

Survey Name	Status	Deadline	Historical Data	Action
Activity Data Q4/2022	Active	27/05/2022	here	Resume
Economic Impact Data 2021	Active	Not available	here	Start
ESG 2021	Active	30/06/2022	Not available	Start

Welcome to the European Data Cooperative (EDC)

The EDC serves as single data entry point for members of private equity and venture capital associations and other contributors across Europe.

Using one platform with a standardised methodology allows for consistent pan-European statistics that are comparable across the region. This will ensure that we produce the most comprehensive overview of Europe's private equity and venture capital markets, allowing us to better inform fund managers, investors, policymakers, regulators and other stakeholders.

You can learn more about the EDC platform by browsing through the FAQ Section. For ease of use, glossaries can be found throughout the platform and a full tutorial is available here.

Changes in Methodology and Historic Data

Historic data submitted by your firm in the past can be viewed in the platform, where available. Where historic data is unavailable, it will be marked as such.

Please note that while we have not yet migrated all previous years' data onto the platform, this information remains held by your respective association(s) on secure servers, as before, and can be sent to you at any point, on request.

If you have any other questions regarding the above, or wish to amend your firm's historic data, please get in touch with the association responsible for collecting your data.

Thank you for your support.

© European Data Cooperative 2016 EDC GmbH general Terms and Conditions Appendix of association-specific Terms and Conditions Privacy Policy EDC Tutorial EDC-NACE code sector activity correspondence

What does the EDC platform look like?

Activity survey home page

EuropeanDataCooperative

Activity survey home page

Funds
Collects information on funds managed by the firm. Please create a fund profile prior to reporting any transactions. Once a fund profile is created it will be accessible in the Funds section.
Manage funds ADD

Companies
Collects information on all companies in the firm's portfolio. Please create a company profile prior to reporting any transactions.
Manage companies ADD

Capital under Management
Collects information on the capital managed, the total amount invested at cost and the total number of companies in portfolio at the end of the year. Please complete the information before submitting the last survey of the year.
ADD

Summary of the current survey period
CURRENT SURVEY PERIOD: AS/2020
Manage funds, companies and activity in one place.

Total investments	0.00 thousands EUR	0 Companies
Total divestments	0.00 thousands EUR	0 Companies
Total fundraising	0.00 thousands EUR	0 Funds

Go to summary

Annotations:
 - Manage fund profile, add fundraising information (points to Funds section)
 - Manage portfolio company profiles, add investments/divestments (points to Companies section)
 - Update CuM (points to Capital under Management section)
 - Review data before submitting (points to Summary table)
 - Export data (points to Export button)
 - Summary of data provided for survey period (points to Summary table)
 - Access Glossary (points to Glossary button)

© European Data Cooperative 2016 EDC GmbH general Terms and Conditions Appendix of association-specific Terms and Conditions Privacy Policy EDC Tutorial

What does the EDC platform look like?

Activity survey summary and submit page

Check and manage investment, divestment, fundraising, and CuM information

EuropeanDataCooperative

Funds
Companies
Capital under Management
Summary and submit
Export

Summary and submit CURRENT SURVEY PERIOD AS/2020

Investment Data retrieved from public sources is **highlighted**

Drag a column header here to group by that column

Investment	Investment completion date *	Company name *	Investment stage *	Transaction currency *	Transaction value (thousands) *	Total amount invested by firm (thousands)
No data to display						

Divestment Data retrieved from public sources is **highlighted**

Drag a column header here to group by that column

Divestment	Divestment completion date *	Company name *	Divestment method *	Currency	Total amount divested at cost by firm (thousands)
No data to display					

Fundraising Data retrieved from public sources is **highlighted**

Drag a column header here to group by that column

Fundraising	Closing date *	Fund name *	Type of closing *	Fund currency	Total amount raised for this closing (thousands)
No data to display					

Capital under Management

Capital under Management Please complete the information from the Capital under management section before submitting the survey.

Agree with the Terms and Conditions [EDC GmbH general Terms and Conditions, Appendix of association-specific Terms and Conditions]

Approve and submit
your activity data for the reporting period

© European Data Cooperative 2016 EDC GmbH general Terms and Conditions Appendix of association-specific Terms and Conditions Privacy Policy EDC Tutorial

Submit survey

What does the EDC platform look like?

Economic impact survey

The screenshot shows the 'Economic Impact Data' survey interface. At the top right, it indicates 'CURRENT SURVEY Economic Impact Data 2020' with buttons for '+ Company' and 'View historical data'. A search bar is located on the left. The main table has columns for 'Company', 'Number of FTE (global)', 'Currency', 'Company turnover (global) (thousands)', 'EBITDA (thousands)', 'CAPEX (thousands)', 'Company fully exited before the end of 2020?', and 'Add-ons or Carve-outs during 2020?'. The 'Company' column includes sub-columns for 'EXCLUDE 2020 Add-ons/Carve-outs' and 'INCLUDE 2020 Add-ons/Carve-outs' for the years 2019 and 2020. The 'Impact of Add-ons and/or Carve-outs during 2020' column includes 'Cumulative number' and 'Cumulative amount' (Number of FTE and Turnover in thousands). Below the table, there is a checkbox for 'Agree with the Terms and Conditions' and a green 'Submit' button. A note states 'Data retrieved from public sources is highlighted'. Callout boxes provide instructions: 'Double click to edit company line data, save information entered' (pointing to the company selection area), 'Input data with and without add-on/carve-out effects' (pointing to the include/exclude columns), 'State impact of add-ons/carve-outs' (pointing to the CAPEX/EBITDA/turnover columns), 'Include companies not already listed' (pointing to the '+ Company' button), and 'Indicate companies exited during survey year' (pointing to the 'Company fully exited...' column).

About Invest Europe

Invest Europe is the **voice of investors** in privately held companies in Europe

- > Invest Europe is the association representing Europe's private equity, venture capital and infrastructure sectors, as well as their investors.
- > Our members take a long-term approach to investing in privately held companies, from start-ups to established firms. They inject not only capital but dynamism, innovation, and expertise. This commitment helps deliver strong and sustainable growth, resulting in healthy returns for Europe's leading pension funds and insurers, to the benefit of the millions of European citizens who depend on them.
- > Invest Europe aims to make a constructive contribution to policy affecting private capital investment in Europe. We provide information to the public on our members' role in the economy. Our research provides the most authoritative source of data on trends and developments in our industry.
- > Invest Europe is the guardian of the industry's professional standards, demanding accountability, good governance, and transparency from our members.
- > Invest Europe is a non-profit organisation with 27 employees in Brussels, Belgium.
- > For more information please visit www.investeurope.eu

About Invest Europe Research

Invest Europe is recognised as the authoritative data source for European private equity and venture capital by institutions including the European Commission and OECD (Organisation for Economic Co-operation and Development).

Rigorous research has underpinned Invest Europe's work with policymakers, media, fund managers, and other stakeholders since 1984. To deliver this robust, trusted research data and insight, Invest Europe collects data on more than 1,800 firms.

INVEST EUROPE RESEARCH TEAM

Research Director
Julien Krantz

Research Manager
Daniel Irwin-Brown

Research Officer
Lucrezia Lo Sordo

research@investeurope.eu
www.investeurope.eu

PEREP_ANALYTICS AUTHORISED STATISTICS PROVIDER FOR INVEST EUROPE

Statistics Manager
Iuliana Furica

Statistics Leads
Adriana Suket
Alexandra Ehupov
Cristina Porumboiu

Statistics Team
Alexandra Bogomazova
Alexandra Ionescu
Andreea Anca
Angela Sapun-Cucu
Bianca Ostropet
Dragos Tanasescu
George Radulescu
Luiza Dima
Silvia Costea
Tiberiu Mihailescu
Valentin Lepadat

info@perepanalytics.eu

Acknowledgements

We are grateful for the generous support of General Partners representing private equity and venture capital firms across Europe who provide us with their activity data. These comprehensive and verified pan-European statistics would not be possible without their ongoing commitment.

We also thank all the regional and national private equity associations formally partnering with Invest Europe as part of the European Data Cooperative (EDC):

Active Owners Denmark - Denmark

AIFI – Italy

BVA - Belgium

BVCA - Bulgaria

BVCA - UK

BVK - Germany

CVCA - The Czech Republic

France Invest - France

FVCA – Finland

LPEA - Luxembourg

NVCA - Norway

NVP - The Netherlands

PSIK - Poland

ROPEA - Romania

SECA - Switzerland

SPAINCAP - Spain

SVCA - Sweden

EuropeanDataCooperative

**INVEST
EUROPE**